

SLASH

SAILPLANE

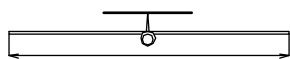


Order N°: 020134

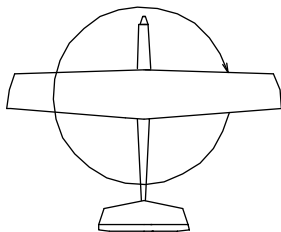
Radio system you'll need :



880 mm



1610 mm



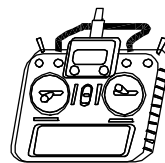
20,2 dm²
33,7-37,1 g/dm²



0,68 - 0,75 kg



special



- ailerons - 2 servos
- elevator

Manufactured by:

TOPMODEL CZ

679 05 HABRŮVKA 100 - CZECH REPUBLIC

www.topmodelcz.com

e-mail: info@topmodelcz.cz

UPOZORNĚNÍ!

- Tato stavebnice není hračka a není vhodná pro děti do 14 let.
- Nesprávné použití může způsobit poškození tohoto výrobku nebo zranění.
- Při použití tohoto modelu jste plně zodpovědní za své činy.
- Létejte v bezpečné vzdálenosti od obydlených zón. Před zapnutím rádia se ujistěte, že nikdo jiný nepoužívá stejnou frekvenci jako vy!
- Řiďte se pravidly pro létání v dané zemi.

POZNÁMKY K MONTÁŽI:

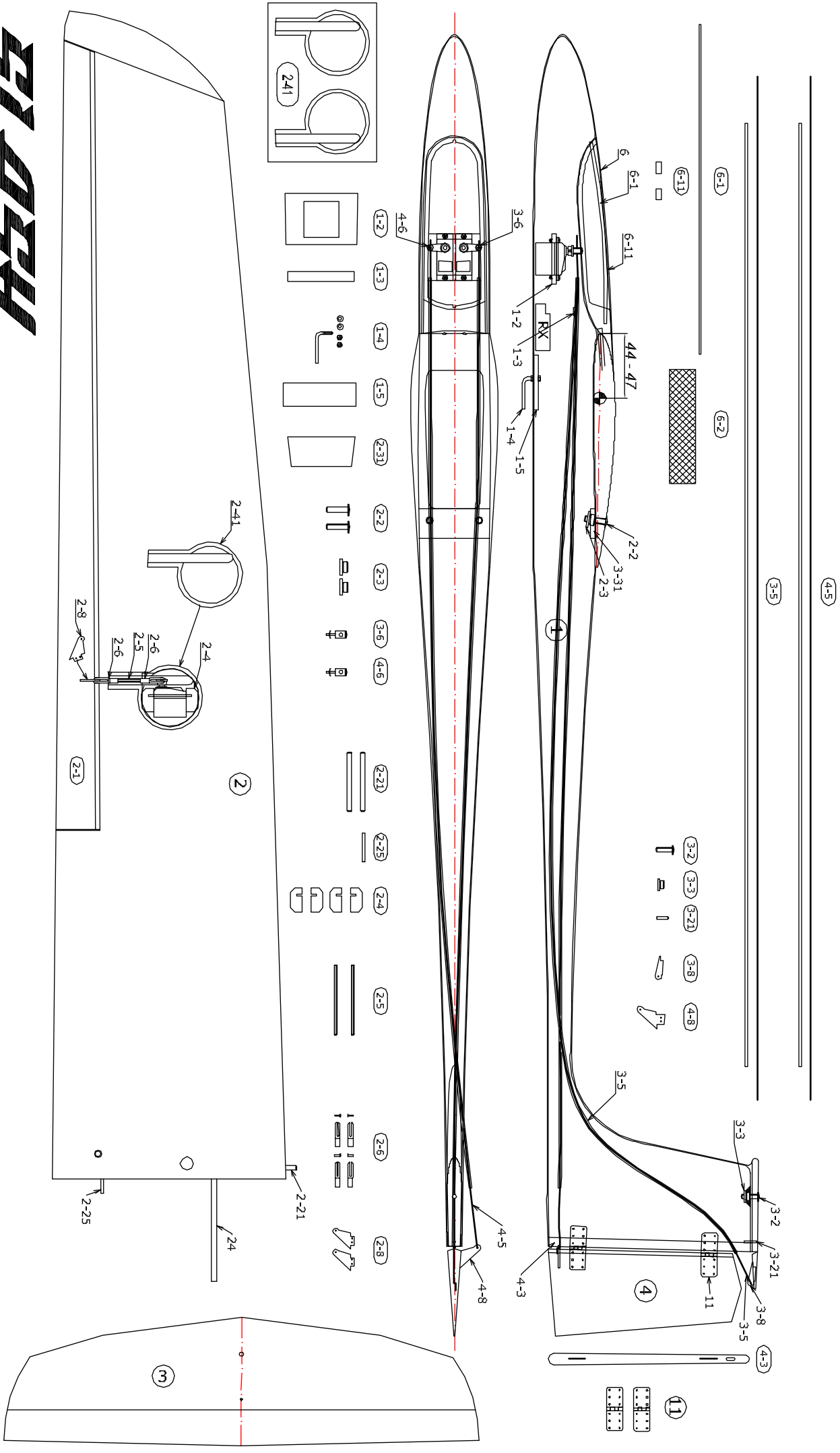
- Pokud lepíte díly ze sklolaminátu, tak povrch obruste (zdrsňte), týká se to také vnitřní strany laminátových trupů. Není-li uvedeno jinak, všechny neoznačené míry jsou v milimetrech
- Není-li uvedeno jinak, všechny neoznačené míry jsou v milimetrech
- Odstraňte potahovou folii v místě lepení potaženého dílu.
- Před montáží zkontrolujte otvory v pákách kormidel a pákách serv, popř. upravte jejich velikost.
- Před montáží serv do modelu zkontrolujte funkci serv pomocí servotestru.
- Trup s uříznutou přídí pro montáž elektromotoru má již správné vyosení, motorová přepážka se lepí dovnitř trupu, rovnoběžně s odřezanou částí.
- Křídla některých modelů větroňů mají na koncích úmyslné překroucení, tzv. „negativ“ - odtoková hrana na konci křídla směřuje nahoru.
- Úhly seřízení (úhel křídla, výškovky a vyosení motoru) zkontrolujte pomocí EWD váhy.
- Před prvním startem zkontrolujte, zda nejsou díly modelu zkroucené. Náprava je možná pomocí horkovzdušné pistole.
- Zkontrolujte polohu těžiště a v případě potřeby model dovažte vhodným závažím.
- Zkontrolujte smysl a velikost vychylek kormidel.

ATTENTION!

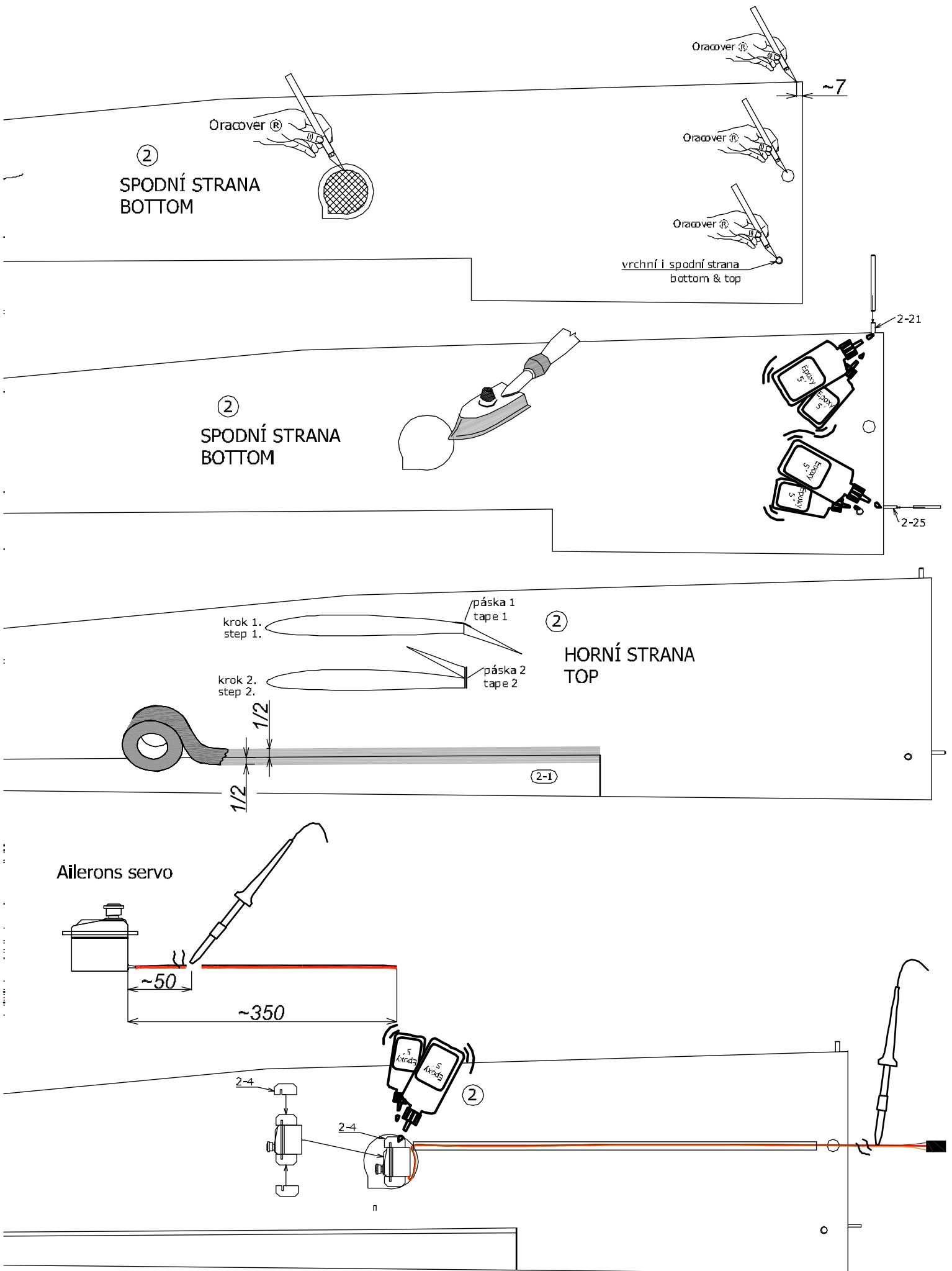
- This model construction kit is not a toy and is not suitable for children under the age of 14.
- Incorrect use of this model could cause material damage or personal injury.
- You are fully responsible for your actions when you use this model.
- Fly at a safe distance from occupied zones. Before switching on the radio, be sure, that no one else is using the same frequency as you !
- Follow the rules for flying in your country.

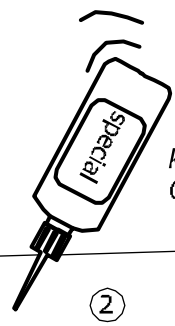
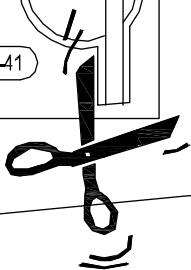
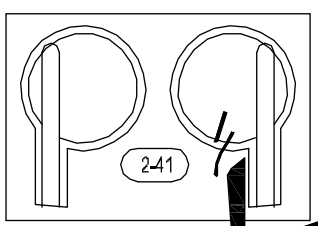
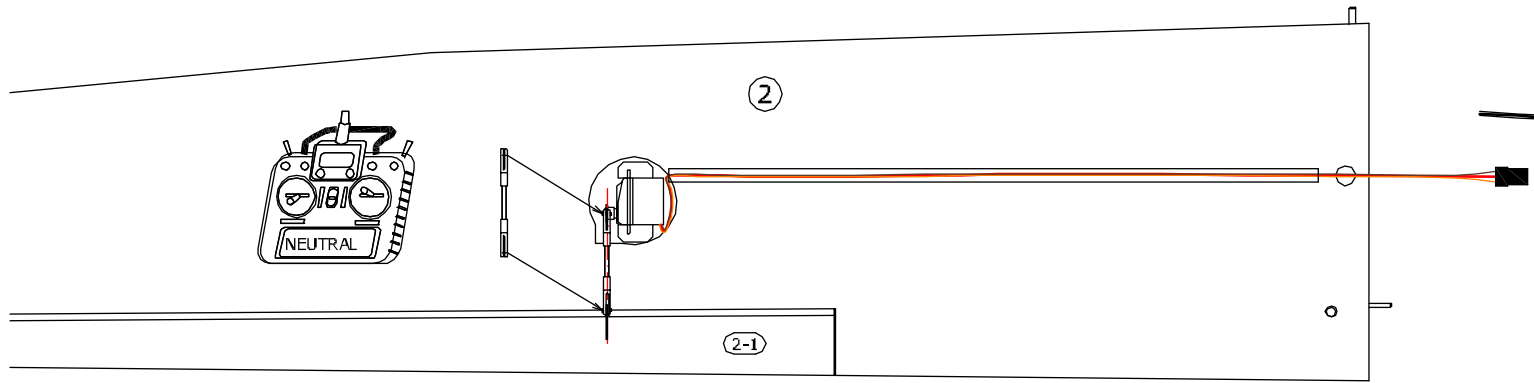
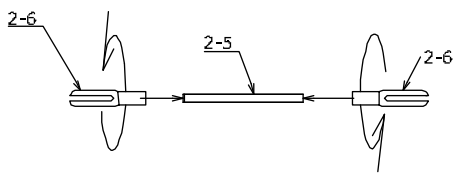
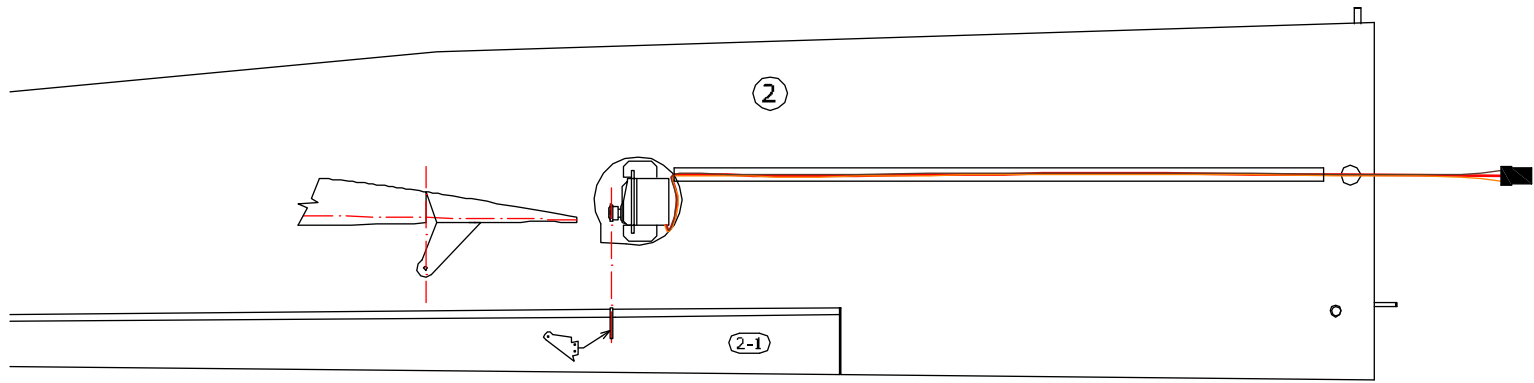
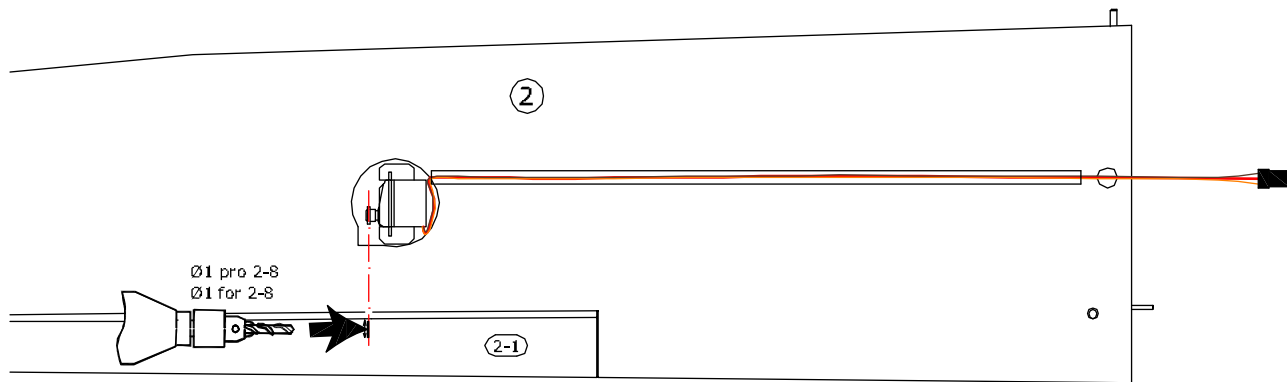
NOTES FOR ASSEMBLY:

- Unless stated, all dimensions are in millimeters
- If you are gluing fiberglass parts, sand (roughen) the surface, including the inside of the fiberglass fuselages.
- Always remove the covering foil at the point of gluing the covering part.
- Always insulate electrical cables and connectors with suitable insulation - eg. shrink tubing.
- Before mounting, check the holes in the control horns and servo arms, or adjust their size.
- Before mounting the servos inside the model, check the function of the servos with a servo tester.
- The fuselage with a cut nose for mounting the electric motor already has the correct misalignment. The motor mount must be glued inside the fuselage, parallel to the cut off part.
- Some glider wings have an intentional distortion, the so-called "negative" at the wingtips - the trailing edge at the wingtip points upwards.
- Check the adjustment angles with the incidence meter.
- Before first take-off check up please the center of gravity, the sense and size of the control surface angle and if model aeroplane parts aren't crooked. The reparation is possible through the use of hot-air dryer.

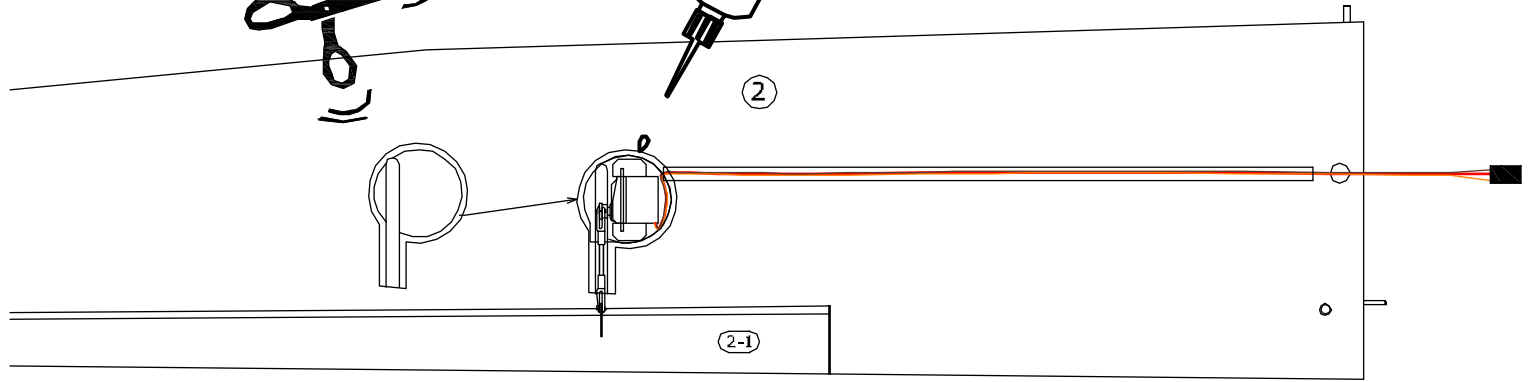


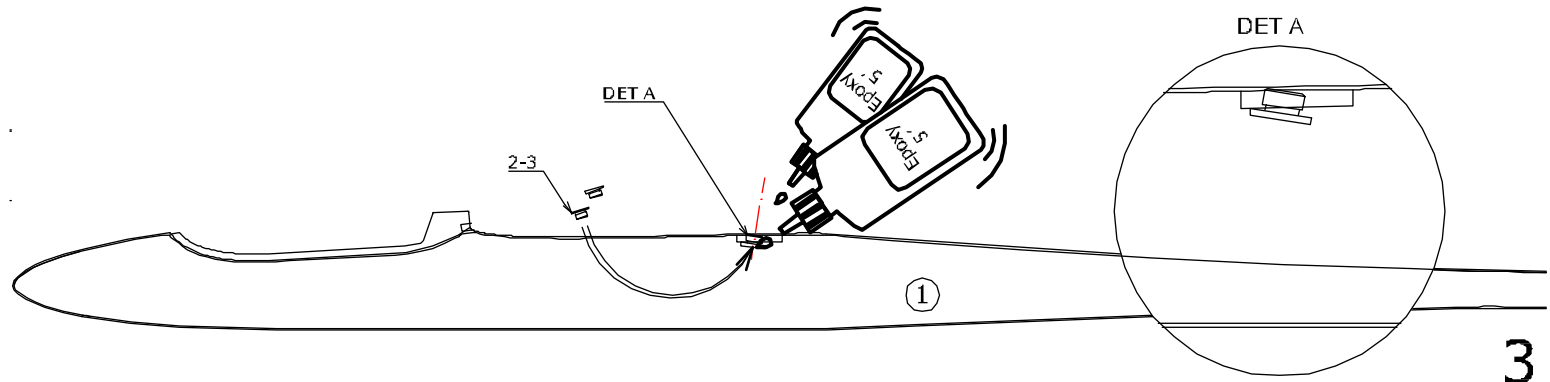
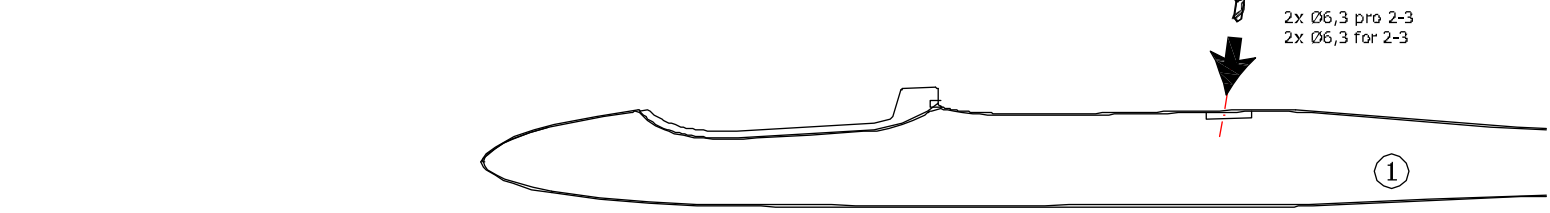
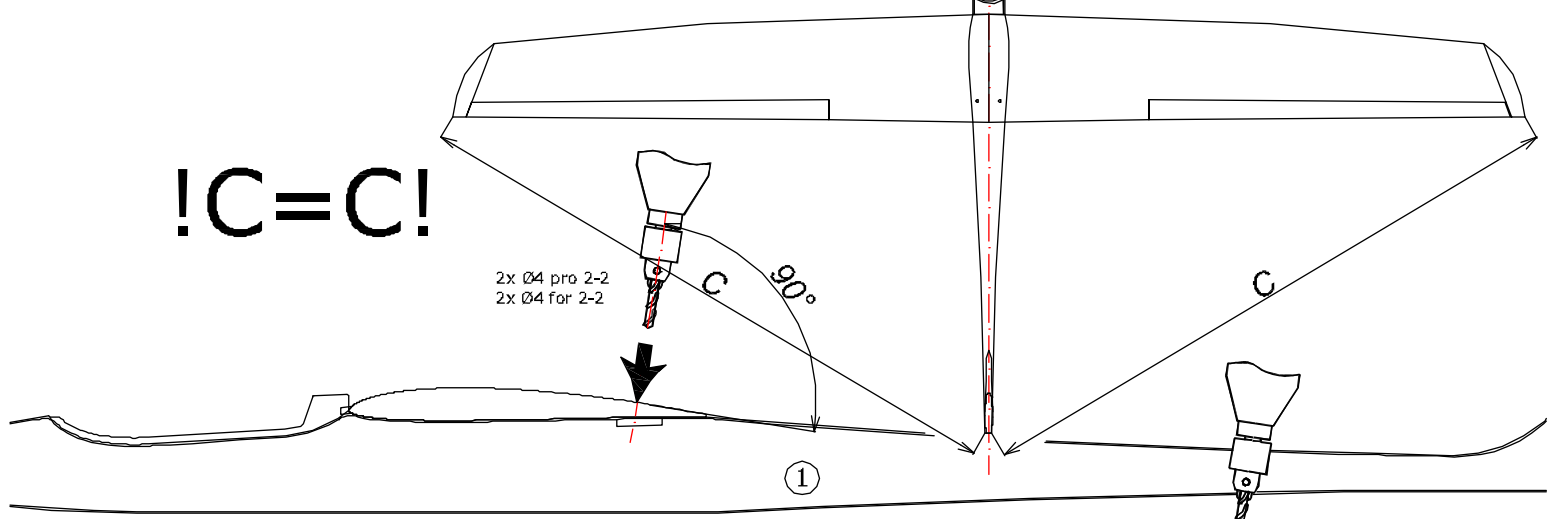
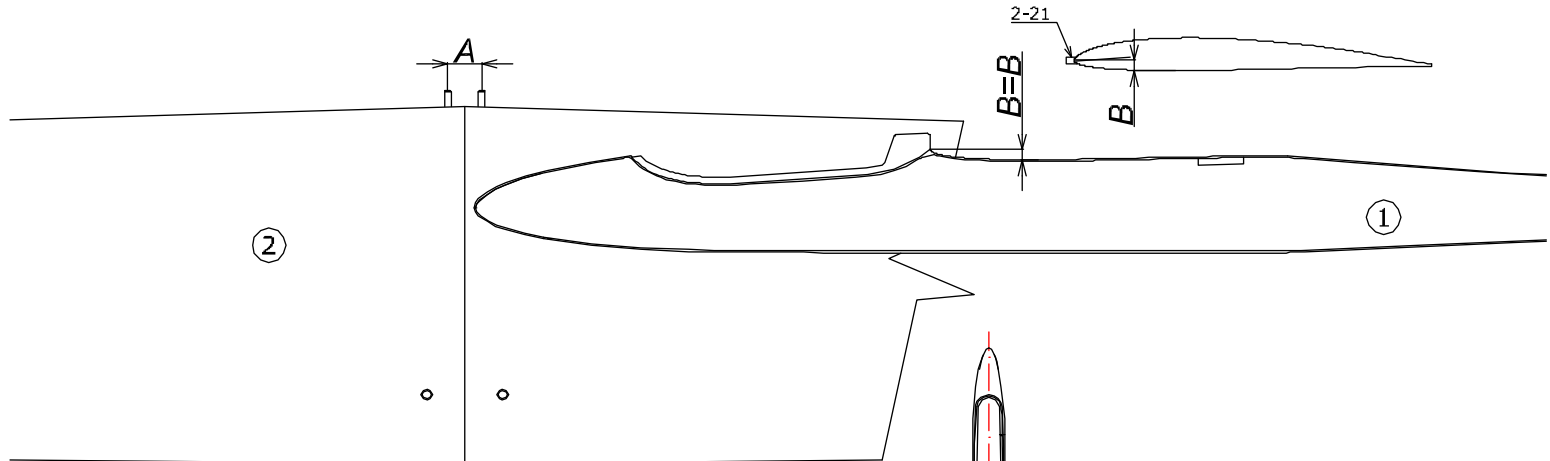
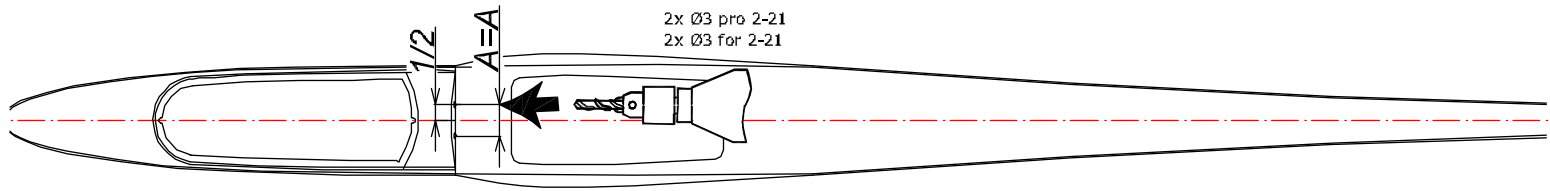
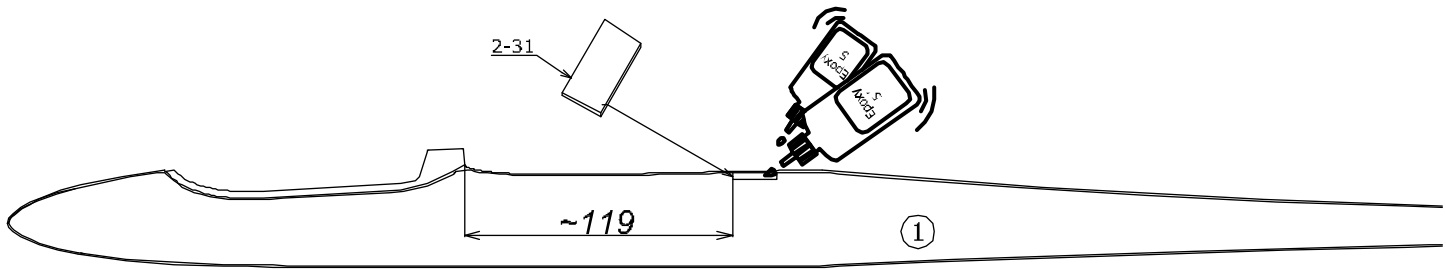
TOPMODEL CZ Manufactured by TOPMODEL CZ s.r.o. 679 05 HABRŮVKA 100 - made in Czech Republic - www.topmodelcz.com - e-mail: info@topmodelcz.cz

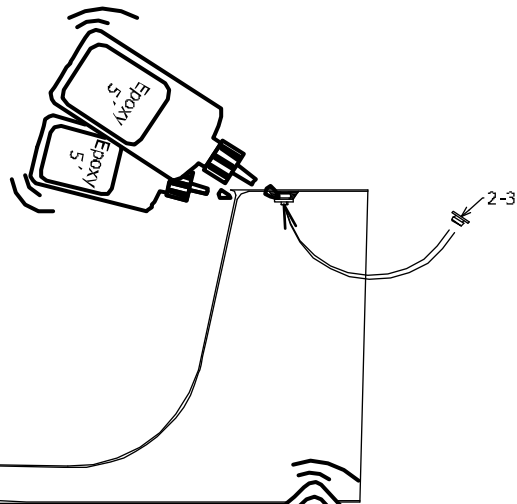
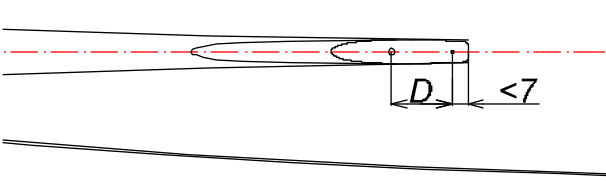
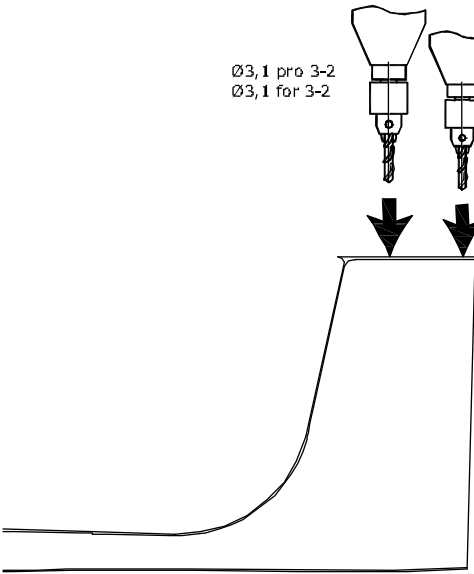
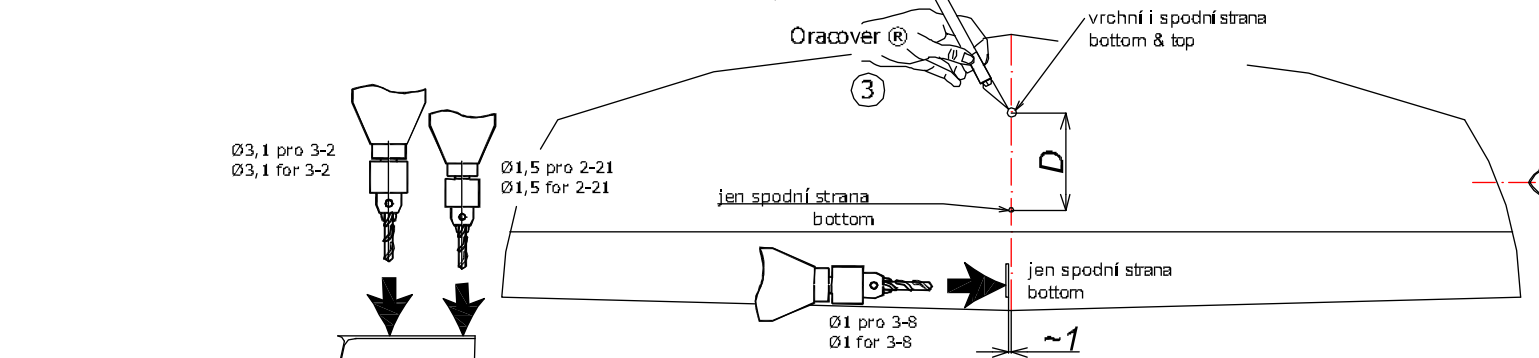
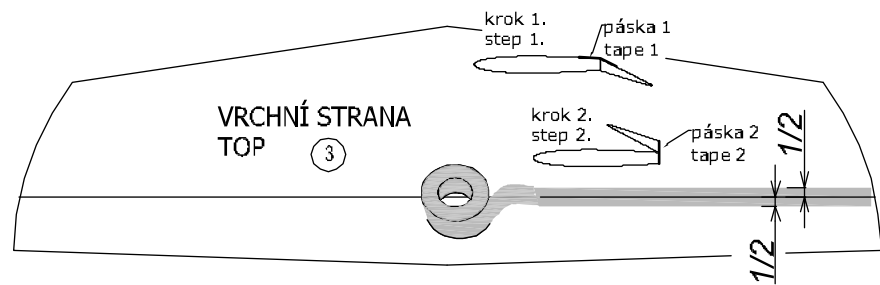




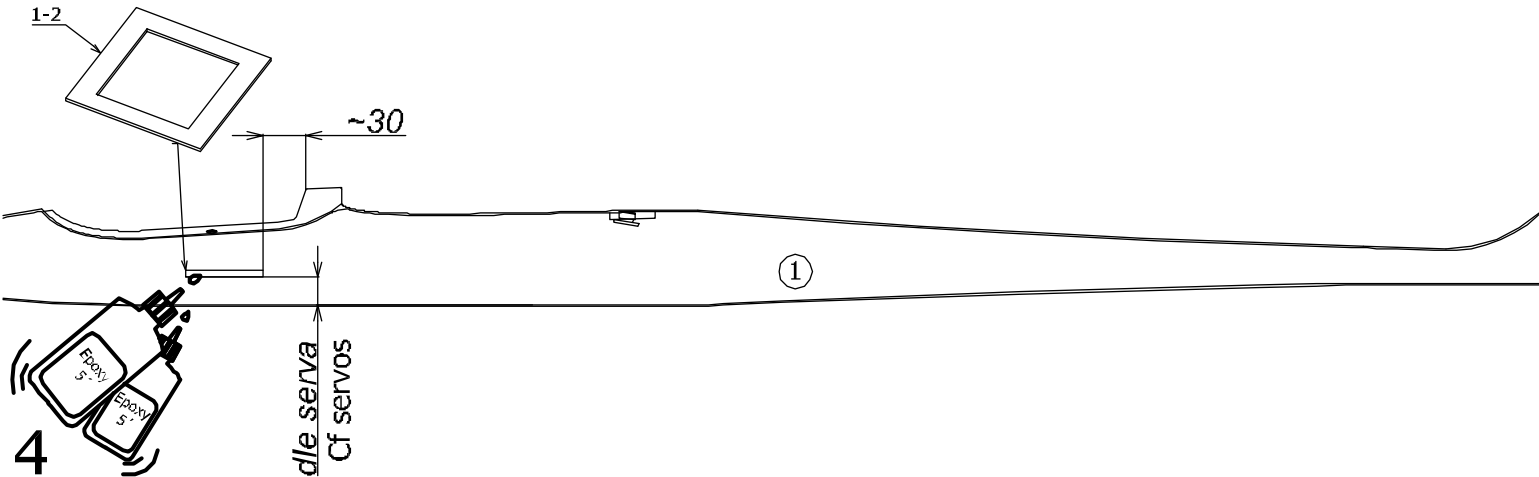
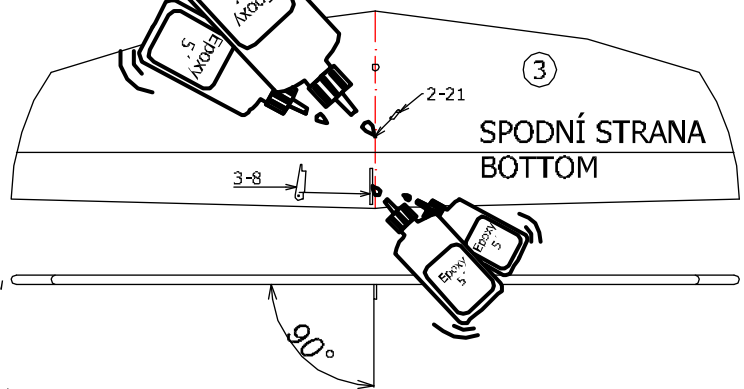
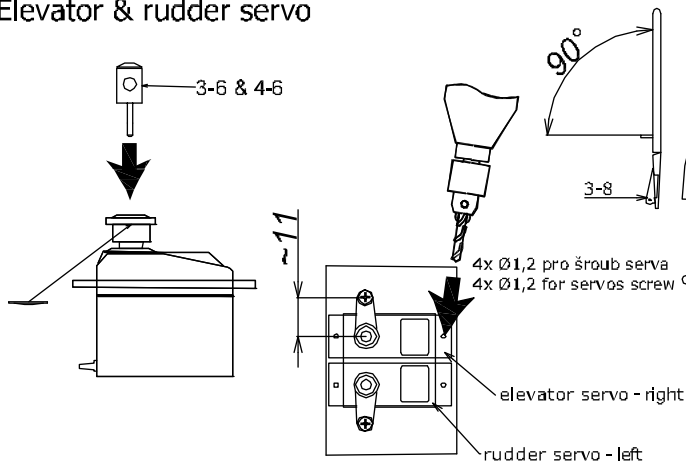
kontaktni lepidlo (Chemopren)
Contact adhesive (UHU Por)

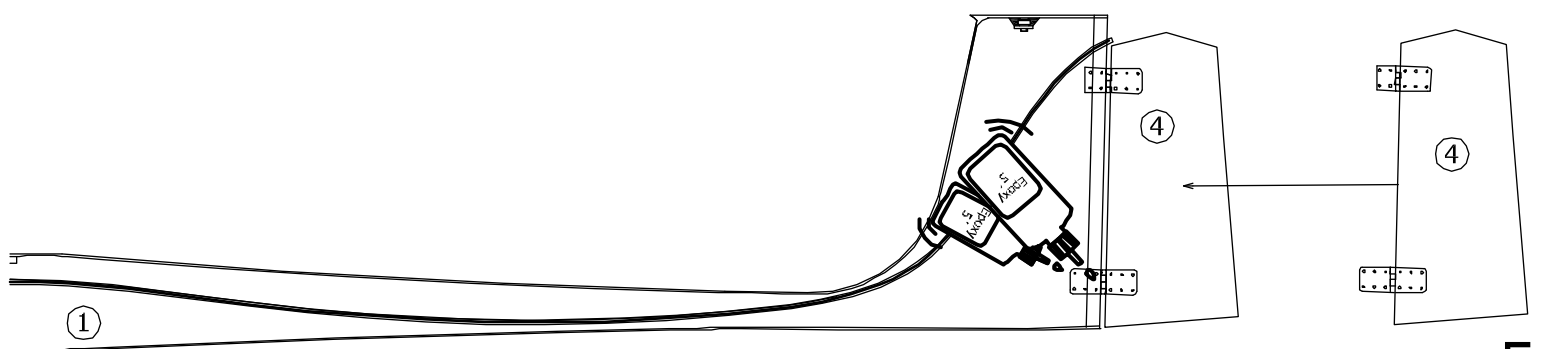
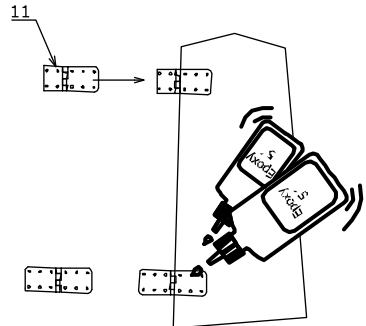
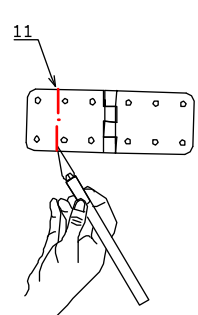
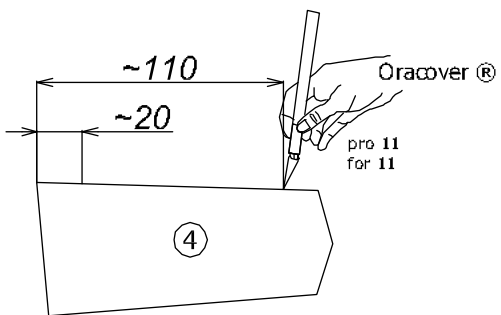
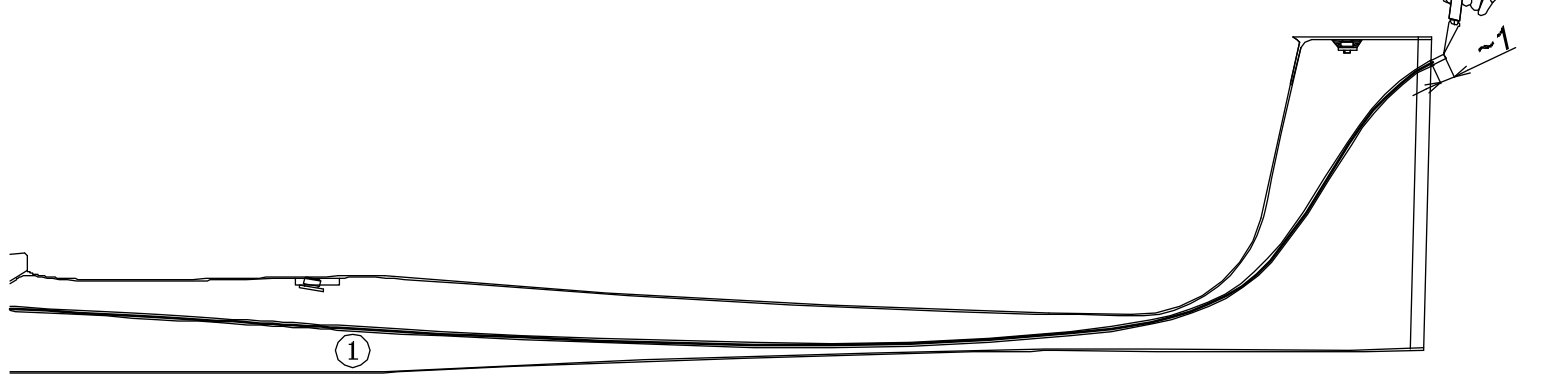
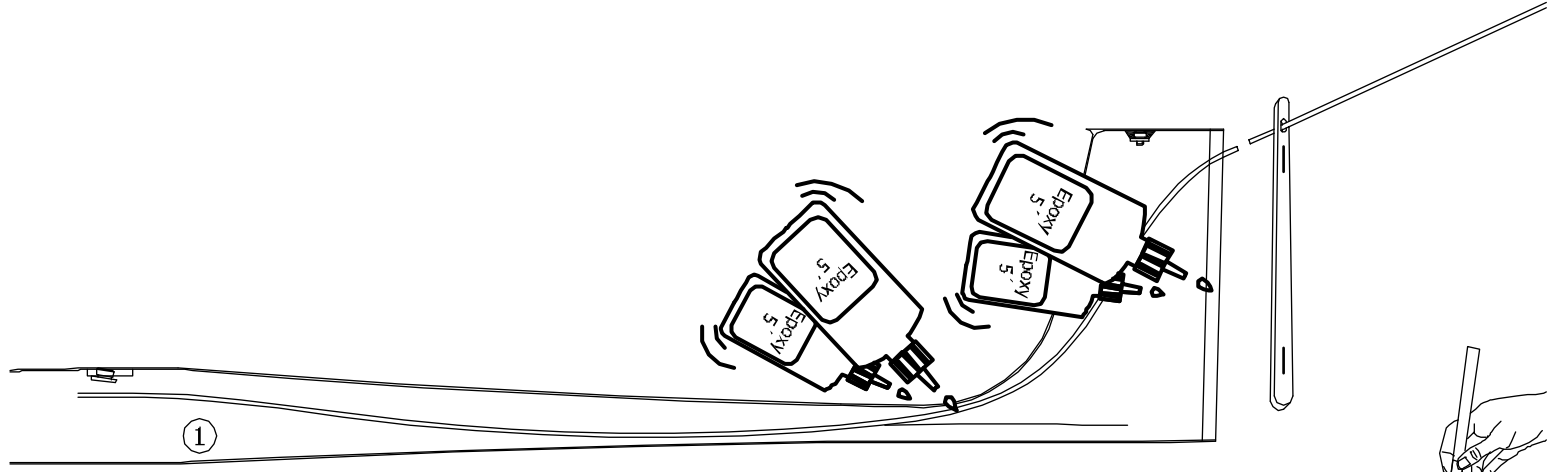
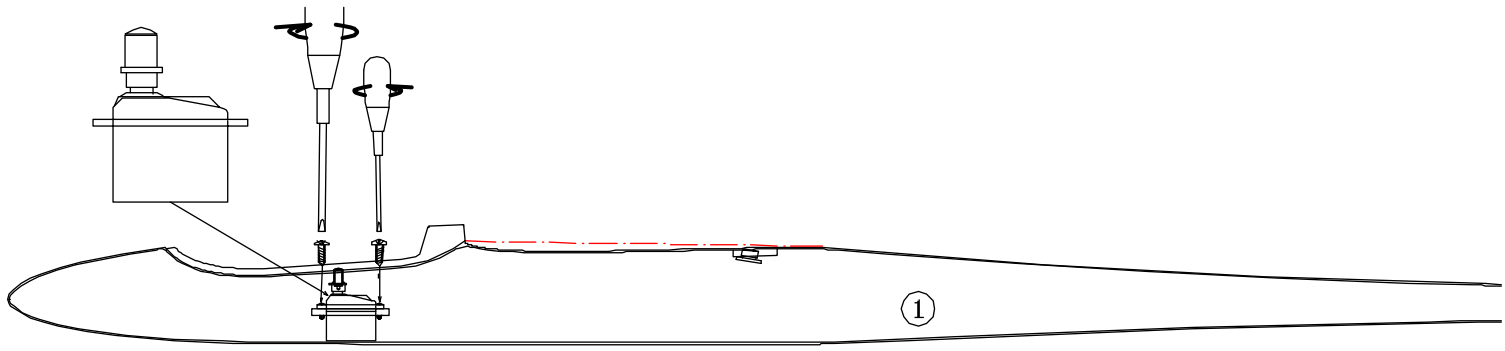


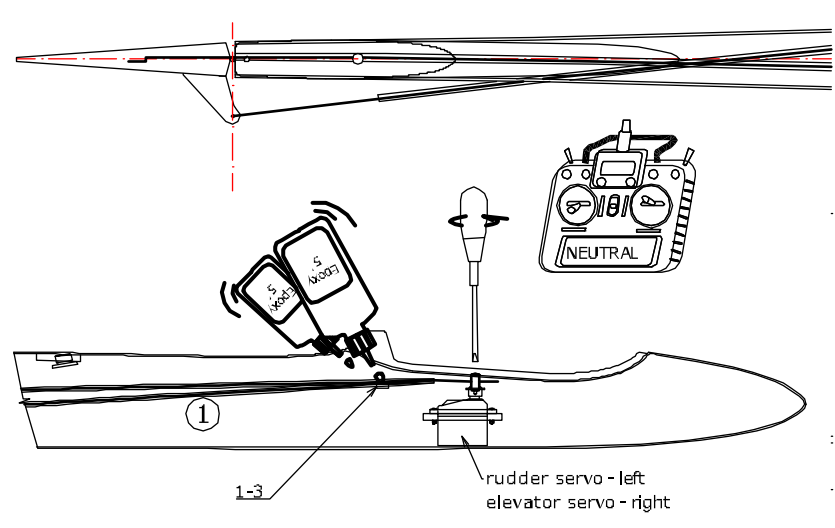
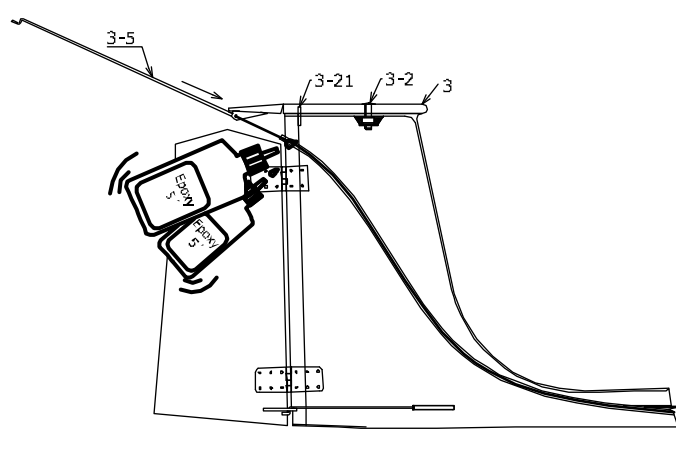
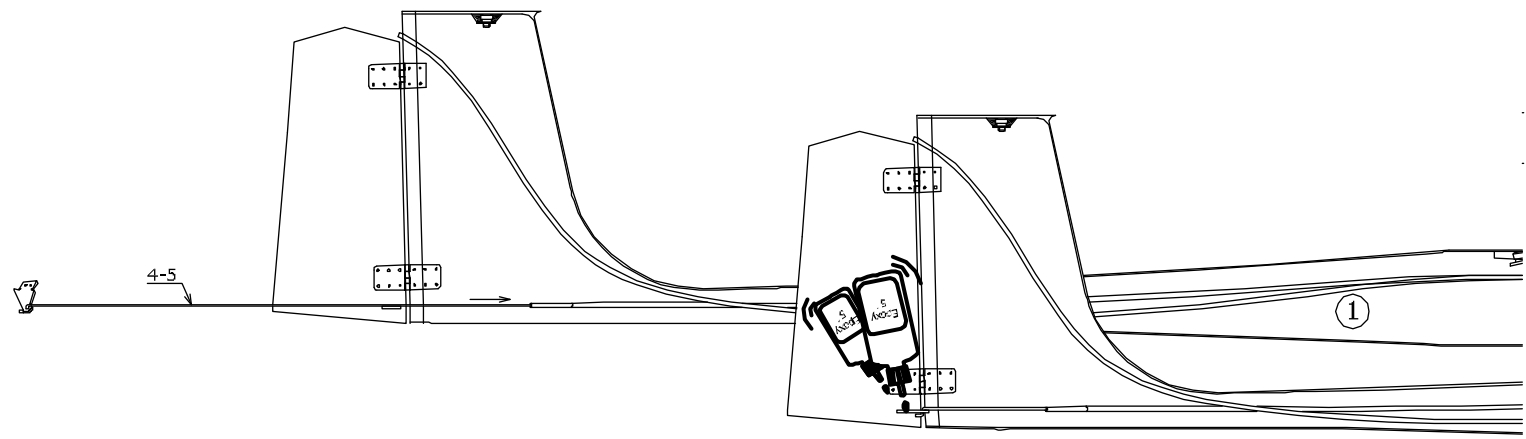
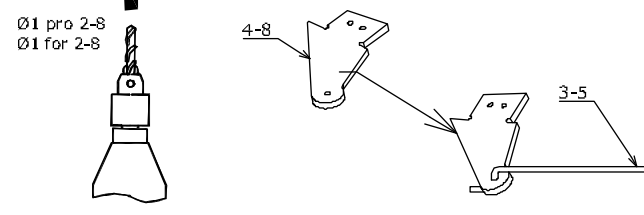
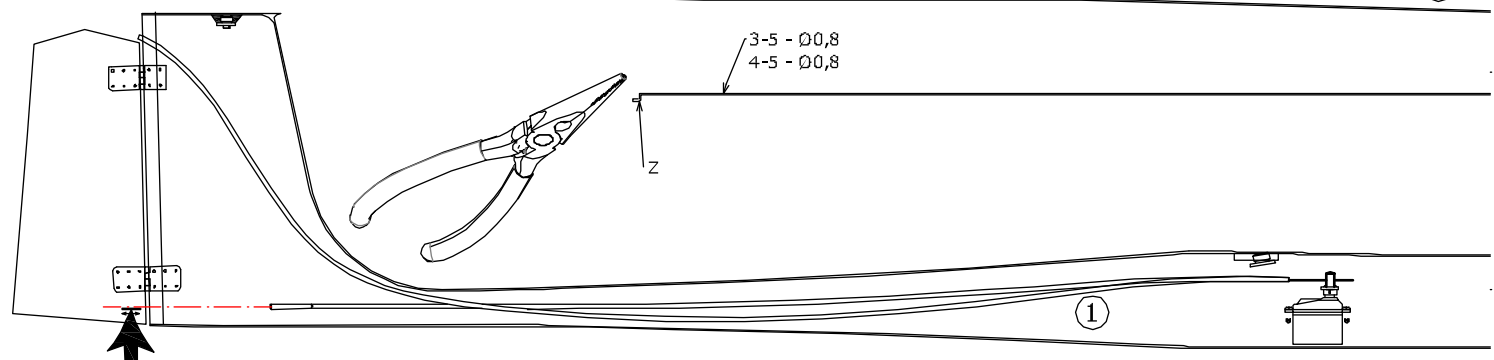
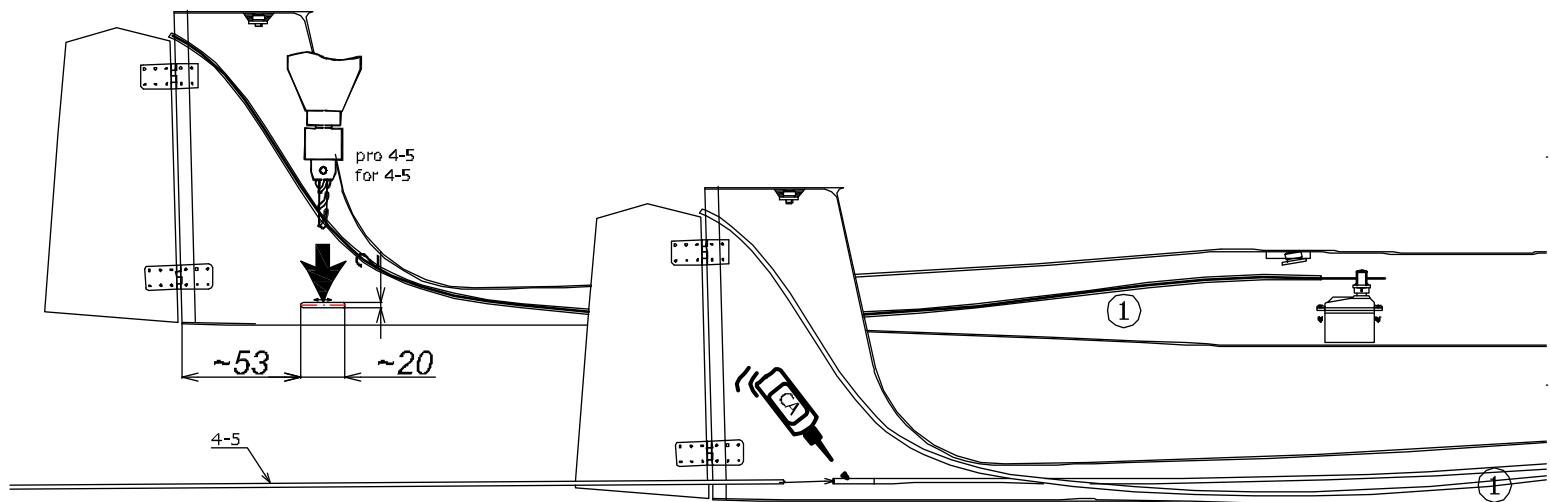


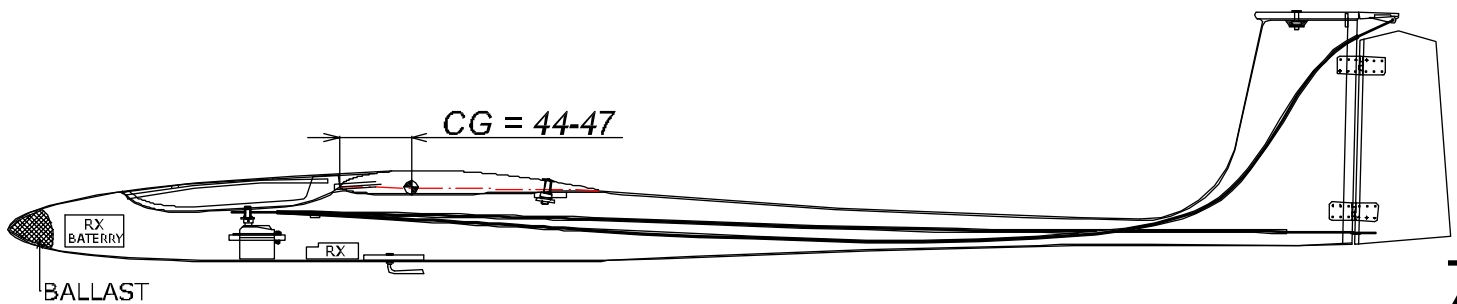
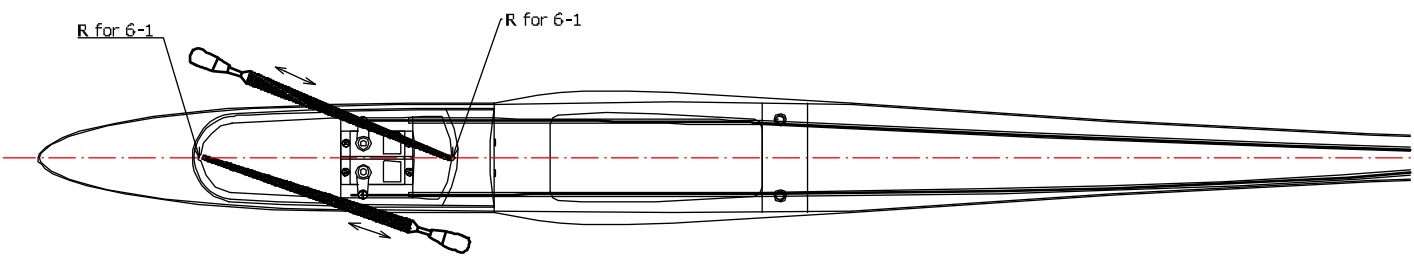
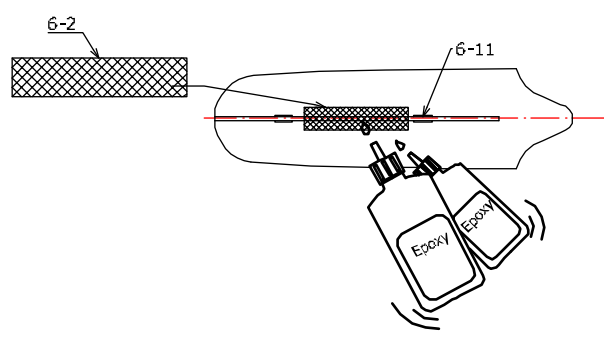
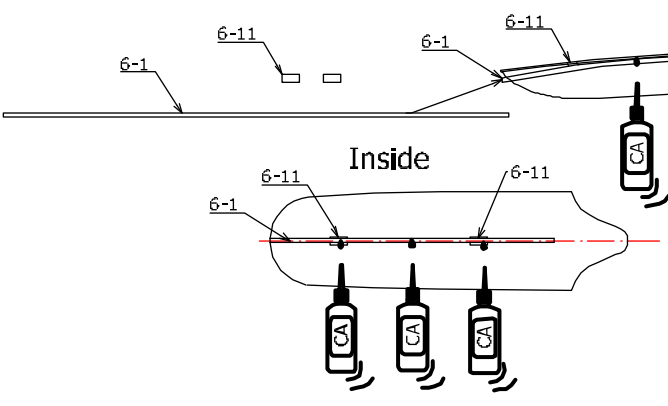
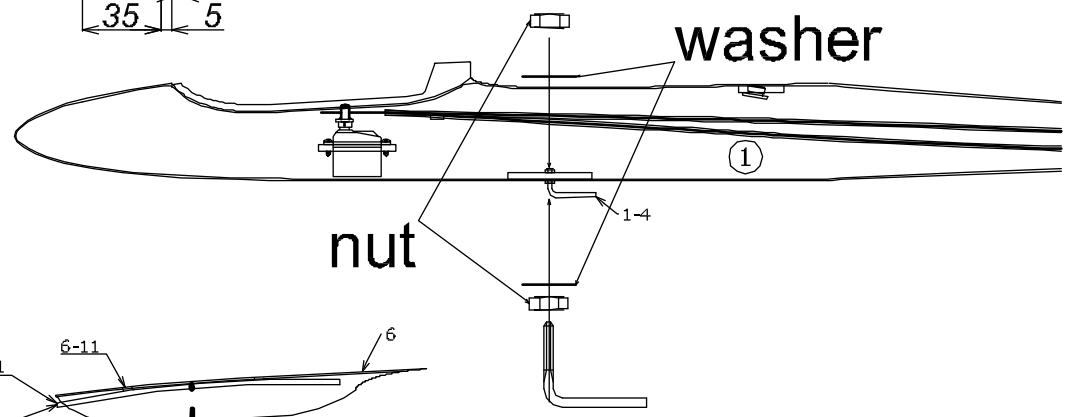
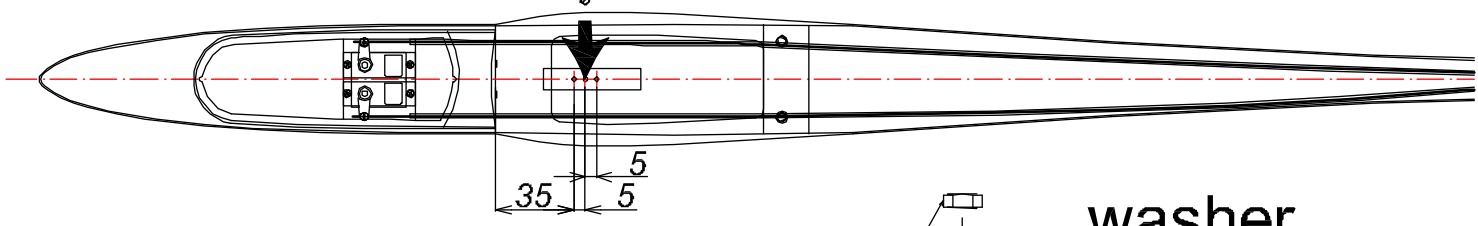
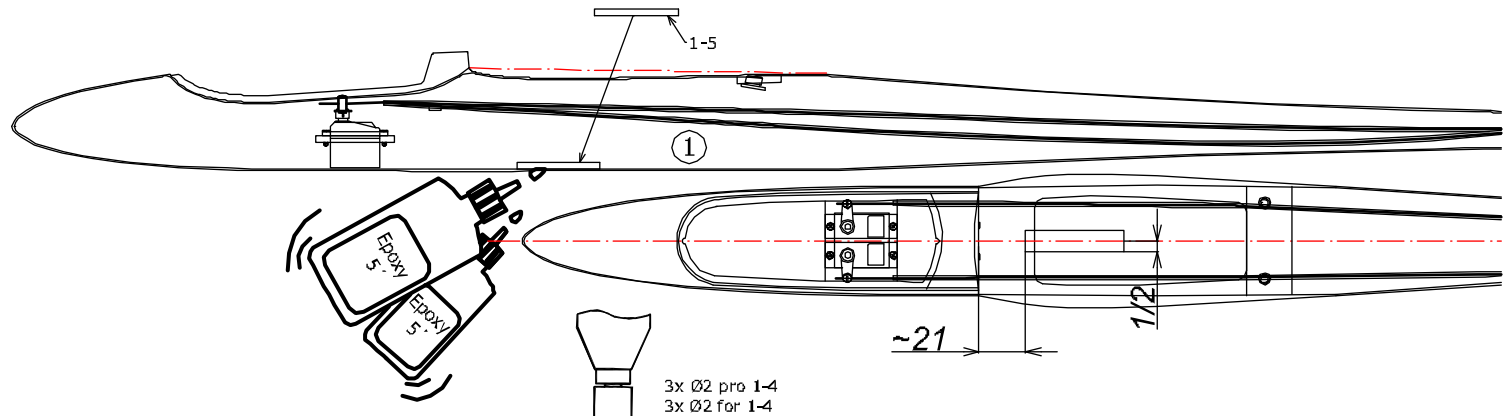


Elevator & rudder servo









Recommended rudder angles :

Ailerons: up 8 - 10mm, expo 20%
 down 4 - 6mm, expo 20%
 Elevator: Up 6 - 8mm, expo 25%
 down 6 - 8mm, expo 25%
 Rudder: 20mm, expo 25%

Part #	Part name	Material/dimensions	Loose	In bag	Spare part
	building instruction		01		
1	fuselage	fiberglass	01		020134-1
1-2	servo tray	plywood 4x37x50mm		01	020134-1-2
1-3	link support	balsa 4x7x50mm		01	020134-1-3
1-4	tow hook	steel Ø2mm, washer, nut		01+02+02	020134-1-4
1-5	tow hook support	plywood 4x12x40mm		01	020134-1-5
2	wing	balsa assembly	02		020134-2ARF 020134-2ARC
2-2	wing fixing screw	plastic M4x20mm		02	1310
2-21	centering pin	fiberglass Ø3x40mm		02	FIBP-3X40
2-25	centering pin	fiberglass Ø2x20mm		01	FIBP-2X20
2-3	nut	Al M4		02	1022 AL
2-31	nut mount	plywood 3x20x46mm		01	020134-2-31
2-4	servo mount	plywood 8x10mm		04	020134-2-4
2-41	wing servo cover	PSH 0,5mm, Ø58mm		02	05018-6
2-5	aileron pushrod	steel M2x45mm		02	zavit2025
2-6	clevis	plastic l-17mm/pin 1mm		04	2100
2-8	aileron horn	fiberglass plate 1mm		02	020134-2-8
24	wing joiner	steel Ø4x240mm		01	020134-24
3	horizontal stabilizer	balsa	01		020134-3ARF 020134-3ARC
3-2	elevator fixing screw	plastic M3x15mm		01	1301
3-21	elevator centering pin	fiberglass Ø1,5x8mm		01	FIBP-1,5x8
3-3	elevator nut	Al M3		01	1004 AL
3-5	elevator link	plastic Ø2mm steel Ø0,8mm	01+01		SET2108
3-6	threaded link	brass for Ø1mm		01	2764 BR
3-8	elevator horn	fiberglass plate 1mm		01	020134-3-8
4	fin	balsa assembly	01		020134-4ARF 020134-4ARC
4-3	closing strip	balsa 6mm		01	020134-4-3
4-5	elevator link	plastic Ø2mm steel Ø0,8mm	01+01		SET2108
4-6	threaded link	brass for Ø1mm		01	2764 BR
4-8	rudder horn	fiberglass plate 1mm		01	020134-4-8
6	canopy	fiberglass	01		020134-6
6-1	canopy fixing	fiberglass Ø2x127mm		01	FIBP-2x127
6-11	mount	plywood 1x6x12mm		02	PL-1612
6-2	fiberglass textile	20x45mm		01	FBT-201000
7	stickers		01		020134-7
11	pinned hinge	plastic 11x28mm		02	2500

Recommended equipment

		Pieces	Item No. www.topmodelcz.cz
transmitter			
receiver	5 channel		
servo	Servo ES 08 MD II	4	3531
battery	4,8V	1	